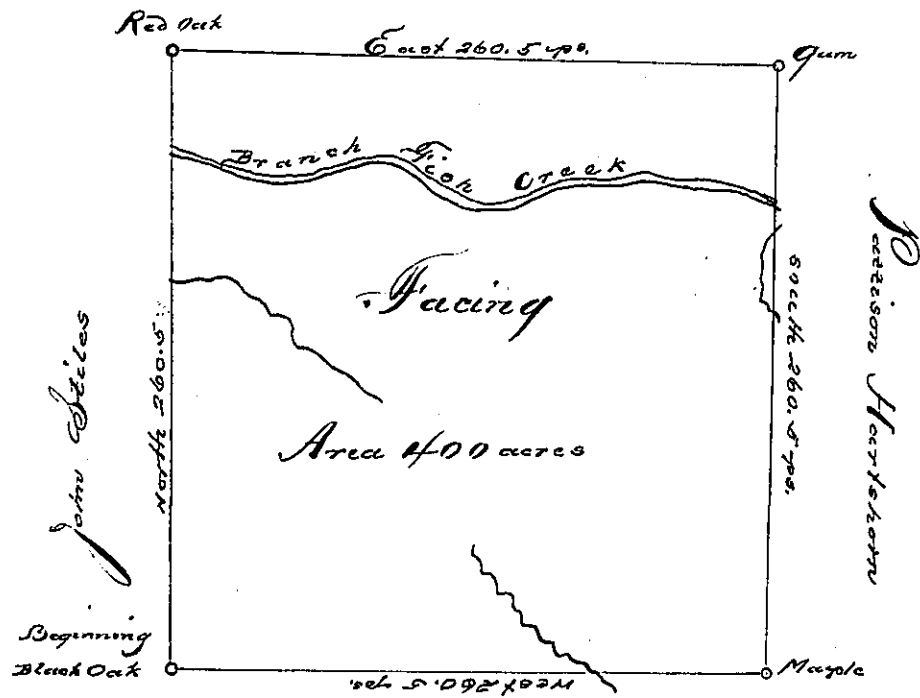


William Gayner



Charles French & Co. Surveyors

The above is a Draught of a Survey made the 22<sup>th</sup> Day of February 1785 In  
 pursuance of a warrant granted to Nathan Field dated the twenty third Day  
 of Dec<sup>r</sup> 1784. Situate on the waters of Fish Creek in Washington County  
 called Facing containing four hundred acres, With the usual allowance

J<sup>n</sup> Hoge D. S.

To John Lukens Esq<sup>r</sup>  
 Surv<sup>r</sup> Gen<sup>l</sup>

IN TESTIMONY that the above is a copy of the original remaining on file in  
 the Department of Internal Affairs of Pennsylvania, made  
 conformably to an Act of Assembly approved the 16th day of  
 February, 1833, I have hereunto set my Hand and caused  
 the Seal of said Department to be affixed at Harrisburg,  
 this first day of February 1898,

James W. Latta  
 Secretary of Internal Affairs.